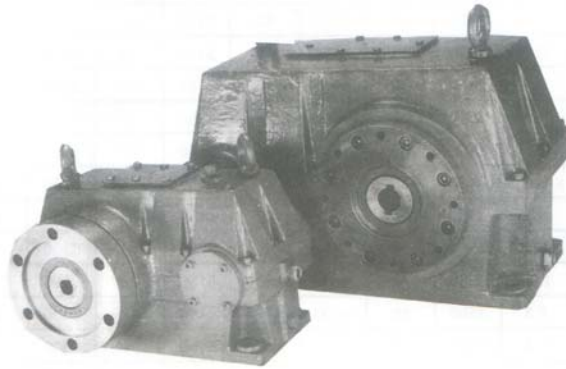


Ext SERIES



HELICAL GEAR BOXES WITH INCREASED POWER RATINGS

SALIENT FEATURES :

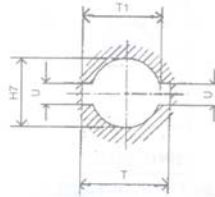
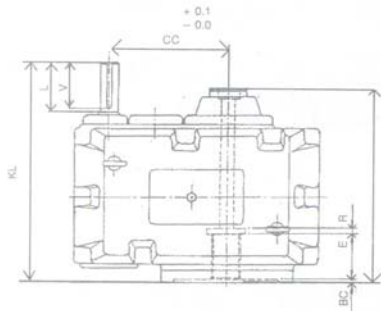
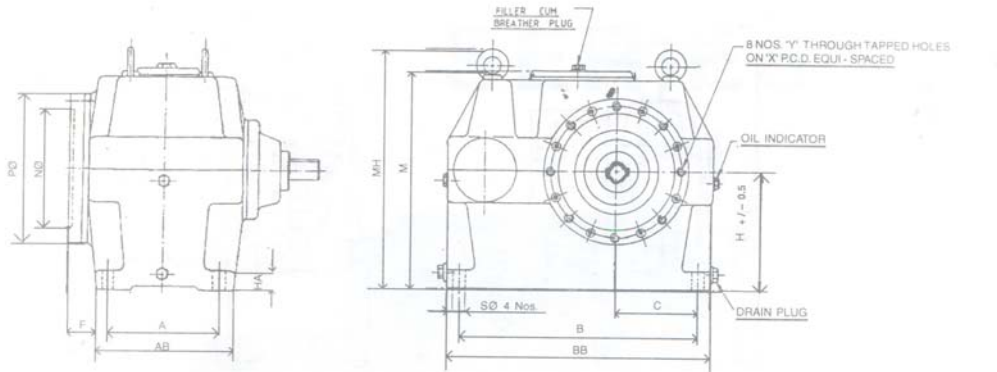
- Profile Grinding of Complete Gear Train.
- Inlet / Outlet Provision for External Water Circulation.
- Generously Designed / Roboust Gear Case.
- Use of Heavy Duty Bearings.
- Modular Design.

Electropower
Group

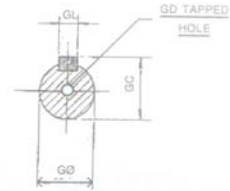
POWER RATINGS :

NOMINAL RATIO	INPUT SPEED		OUTPUT SPEED		10 EXT		15 EXT		20 EXT		70 EXT		80 EXT		100 EXT	
	Rev/Min	Rev/Min	Torq N.M.	Power K.W	Torq N.M.	Power K.W	Torq N.M.	Power K.W	Torq N.M.	Power K.W	Torq N.M.	Power K.W	Torq N.M.	Power K.W	Torq N.M.	Power K.W
8:1	1440	180	930	17.3	3550	67	4400	83	5150	97	8300	156	23350	440		
	950	119	930	11.6	3550	44	4400	55	5150	64	8300	103	23350	291		
	700	87	930	8.5	3550	32	4400	40	5150	47	8300	76	23350	213		
	350	44	930	4.2	3550	16	4400	20	5150	23	8300	38	23350	107		
10:1	1440	144	920	13.9	3550	53	4400	66	5150	77	8300	125	23700	357		
	950	95	920	9.2	3550	35	4400	44	5150	51	8300	82	23700	236		
	700	70	920	6.7	3550	26	4400	32	5150	38	8300	60	23700	173		
	350	44	920	3.4	3550	13	4400	16	5150	19	8300	30	23700	87		
12.5:1	1440	115	915	11.0	3550	43	4400	53	5150	62	8300	100	23700	285		
	950	76	915	7.3	3550	28	4400	35	5150	41	8300	66	23700	189		
	700	56	915	5.4	3550	21	4400	26	5150	30	8300	48	23700	139		
	350	28	915	2.7	3550	10	4400	13	5150	15	8300	24	23700	69		
15:1	1440	96	915	9.2	3550	35	4400	44	5150	52	8100	81	22800	229		
	950	63	915	6.0	3550	23	4400	29	5150	40	8100	53	22800	150		
	700	47	915	4.5	3550	17	4400	22	5150	25	8100	40	22800	112		
	350	23	915	2.2	3550	8	4400	11	5150	12	8100	19	22800	55		
18:1	1440	80	905	7.6	3550	30	4400	37	5150	43	8100	67	23700	198		
	950	53	905	5.0	3550	20	4400	24	5150	28	8100	45	23700	131		
	700	39	905	3.7	3550	14	4400	18	5150	21	8100	33	23700	96		
	350	19	905	1.8	3550	7	4400	9	5150	10	8100	16	23700	47		
20:1	1440	72	905	6.8	3550	27	4400	33	5100	38	8100	61	20800	157		
	950	47	905	4.5	3550	17	4400	21	5100	25	8100	40	20800	102		
	700	35	905	3.3	3550	13	4400	16	5100	18	8100	29	20800	76		
	350	17	905	1.6	3550	6	4400	8	5100	9	8100	14	20800	37		
25:1	1440	58	880	5.3	2500	15	4200	25	4800	29	8600	52	20100	122		
	950	38	880	3.5	2500	10	4200	17	4800	19	8600	34	20100	80		
	700	28	880	2.6	2500	7	4200	12	4800	14	8600	25	20100	59		
	350	14	880	1.3	2500	4	4200	6	4800	7	8600	12	20100	29		
31.5:1	1440	46	880	4.2	2450	12	4200	20	4600	22	8300	40	17800	85		
	950	30	880	2.8	2450	8	4200	13	4600	14	8300	26	17800	56		
	700	22	880	2.0	2450	6	4200	10	4600	10	8300	19	17800	41		
	350	11	880	1.0	2450	3	4200	5	4600	5	8300	10	17800	20		

NOTE : Above ratings are maximum Transmissible.
Recommended Service Factor for Extruder Duty 1.75 min.



**HOLLOW
OUTPUT SHAFT**

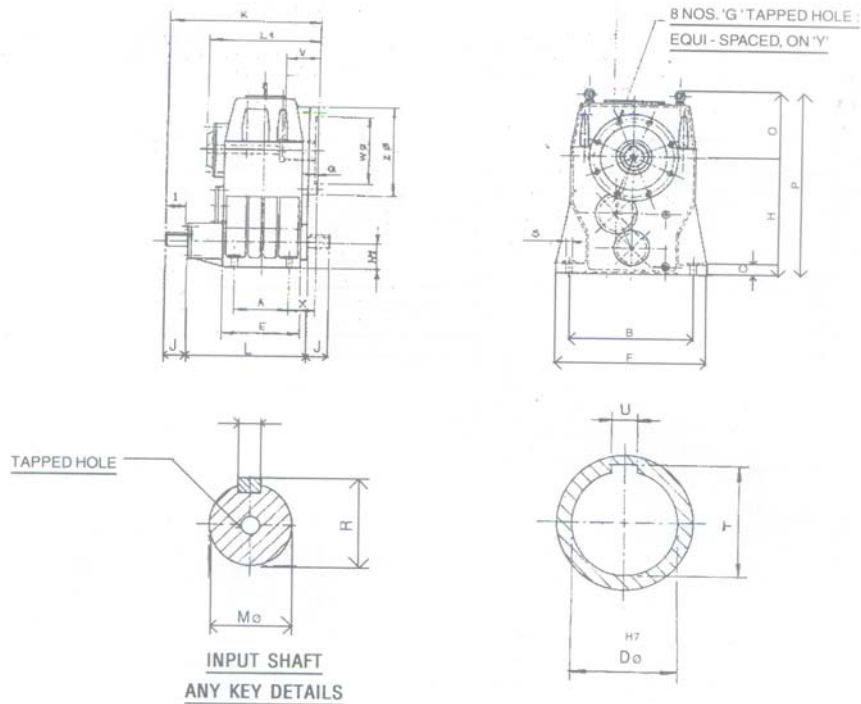


INPUT SHAFT

FRAME SIZE EXT	OVERALL DETAILS									MOUNTING DETAILS											
	KL	CC	K	MH	M	BB	AB	HA	± 0.5 H	B	C	F	A	So	$\frac{H7}{N_6}$	Pe	BC	Y	X		
10	265	180	245	280	215	320	145	20	112	280	80	70	110	13	76	170	4	3/4" BSW	105		
15	375	260	320	350	320	480	210	20	160	430	137.5	50	155	20	140	230	10.5	5/8" BSW	195		
20	535	310	510	430	400	570	300	30	200	520	155	100	258	25	200	300	10	3/4" BSW	250		
70	485	325	400	475	410	600	300	30	200	540	165	88	240	25	225	350	12	3/4" BSW	300		
80	500	410	450	565	490	790	310	40	250	720	235	133	250	22	225	350	12	3/4" BSW	300		

FRAME SIZE EXT	OUTPUT SHAFT DETAILS						INPUT SHAFT DETAILS					
	$\frac{H7}{D_6}$	U	T	T1	E	R	$\frac{H6}{G_6}$	GC	GL	L	V	GD
10	31.8	10	38.4	35.1	31	15	24	27	8	40	35	M-8
15	40	10	48.2	44.1	80	20	31.8	35	10	80	75	M-8
20	60	18	68.8	64.4	140	12	35	38	10	100	90	M-10
70	70	20	79.8	74.9	165	12	40	43	10	90	85	M-12
80	80	22	90.8	85.4	150	12	55	59	16	120	110	M-18

* Max.
Dimensions in mm.



FRAME SIZE EXT	OVERALL DETAILS													OUTPUT SHAFT DETAILS					INPUT SHAFT DETAILS					MOUNTING DETAILS					
	A	B	C	E	F	H	K	L	L1	O	P	S	X	H1	H7 D _o	T	U	V	J6 M _o	I	R	N	J	G _o	Q	Q1	W	Y	Z
10 V	130	210	20	170	250	245	275	227	245	140	385	13	67	65	31.5	31	6.4	65	24	35	27	8	40	3/8" BSW	4	20	102	133	170
15 V	135	340	30	200	390	320	382	287	320	230	550	20	93	90	40	43.3	12	90	32	75	35	10	80	5/8" BSW	105	30	140	195	230
100 V	280	630	60	396	750	600	770	625	570	355	955	32	140.5	130	100	106.4	28	150	55	100	59	16	110	M-16	16	50	350	400	450

* Max.
Dimensions in mm.

OTHER PRODUCTS :

- Helical Geared Motors / Gear Boxes.
- Worm Geared Motors / Gear Boxes.
- Shaft Mounted Helical or Worm Gear Units.
- Elevating Drives.

Narhari Engineering Works Pvt. Ltd.

1, Shah Industrial Estate, Off. Veera Desai Road,
Andheri (West), Mumbai - 400 053.

Tel. : 2673 1825, 2673 1893 Fax No. 2673 2107

E-mail : cearedmotor@vsnl.com • Web Site : www.ceared-motor.com